



**WARNING : Folded or Mutilated Plans will not be accepted.**  
**Plans may be rolled.**  
**Information may not be placed in the outer margins.**

(Dealing No.)

4. Lodged by

(Include address, phone number, email, reference, and Lodger Code)

I. Existing		Created		
Title Reference	Description	New Lots	Road	Secondary Interests
51326546	Lot 1 on SP337684	900	New Road	Emts DA-DE, WA & WB
51326547	Lot 2 on SP337684	11-19, 61-65, 101-110, 116-120, 135-144, 800 & 813	New Road	Emts DF & DG, SA-SD, TA-TC, WC-WF
17487172	Lot 4 on RP229320	900	New Road	Emt G

**LEASE ENCUMBRANCE**

Lease	Lots To Be Encumbered
724663069 (Lease A on SP345431)	900
724663070 (Lease A on SP345431)	900

**MORTGAGE ALLOCATIONS**

Mortgage	Lots Fully Encumbered	Lots Partially Encumbered
722927985	11-19, 61-65, 101-110, 116-120, 135-144, 800 & 813	-
723386376	11-19, 61-65, 101-110, 116-120, 135-144, 800 & 813	-
723708526	900	-
723716240	900	-

Easement F on SP291374 to be surrendered prior to registration of this plan.

800	Pors 188, 189, 192 & 195
900	Pors 188, 189 & 192
11-19, 61-65, 101-110, 116-120, 135-144 & 813	Por 188
Lots	Orig

2. Orig Grant Allocation :

3. References :  
Dept File :  
Local Govt :  
Surveyor : BRSS8354.000

5. Passed & Endorsed :

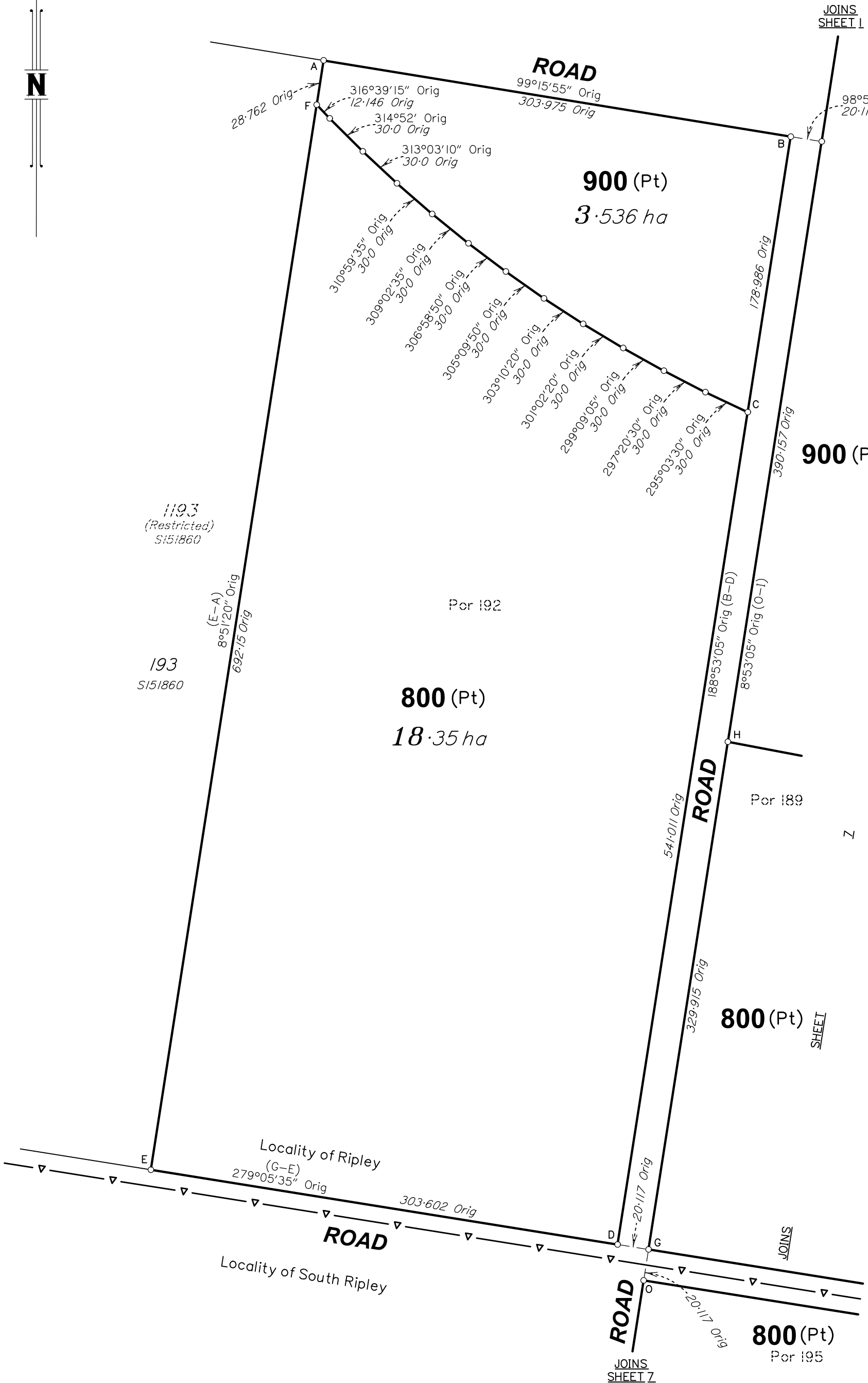
By: LandPartners Pty Ltd  
Date: 2/02/2026  
Signed:   
Designation: Plan Auditor

6. Building Format Plans only.  
I certify that :  
\* As far as it is practical to determine, no part of the building shown on this plan encroaches onto adjoining lots or road;  
\* Part of the building shown on this plan encroaches onto adjoining \* lots and road  
..... Date  
\* Cadastral Surveyor/ Authorised Delegate \*delete words not required

7. Lodgement Fees :

Survey Deposit	#\$	.....
Lodgement	#\$	.....
.....New Titles	#\$	.....
Photocopy	#\$	.....
Postage	#\$	.....
TOTAL	#\$	.....

8. Insert Plan Number **SP337707**



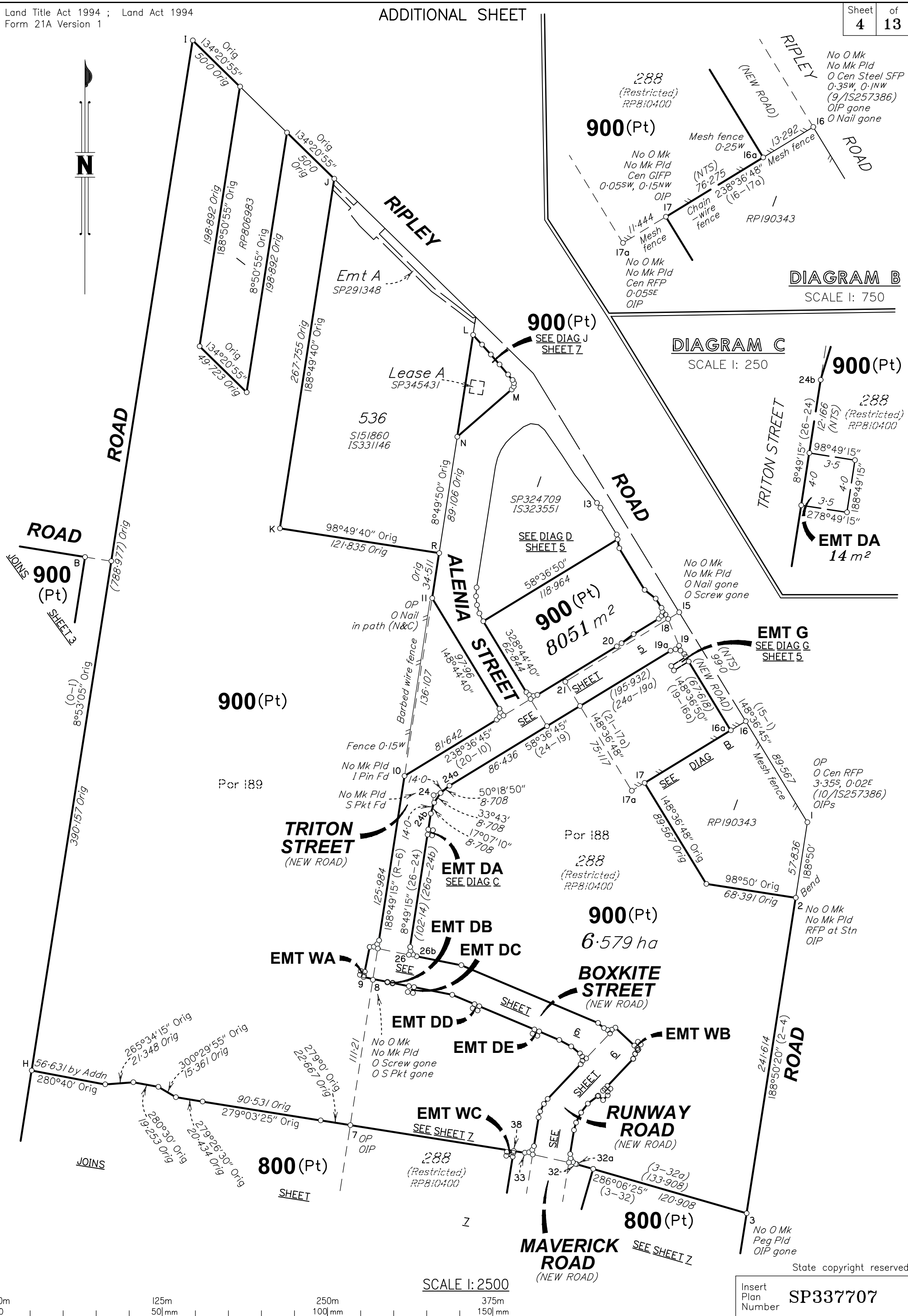
SCALE 1: 2500



State copyright reserved

Insert Plan Number **SP337707**

BRSS8354-000-22-17 SP337707



288  
(Restricted)  
RP810400

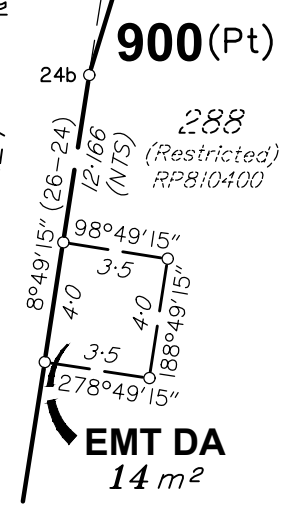
900(Pt)

No O Mk  
No Mk Pld  
Cen GIFF  
0-05sw, 0-15NW  
OIP

No O Mk  
No Mk Pld  
O Cen Steel SFP  
0-3sw, 0-1NW  
(9/1S257386)  
OIP gone  
O Nail gone

DIAGRAM B  
SCALE 1: 750

DIAGRAM C  
SCALE 1: 250



900(Pt)  
SEE DIAG J  
SHEET 7

Lease A  
SP345431

536  
S151860  
IS331146

900(Pt)  
SEE DIAG D  
SHEET 5

900(Pt)  
8051 m²

EMT G  
SEE DIAG G  
SHEET 5

900(Pt)

TRITON STREET  
(NEW ROAD)

EMT DA  
SEE DIAG C

EMT DB

EMT WA

EMT DC

EMT DD

EMT DE

BOXKITE STREET  
(NEW ROAD)

EMT WB

RUNWAY ROAD  
(NEW ROAD)

EMT WC  
SEE SHEET Z

MAVERICK ROAD  
(NEW ROAD)

800(Pt)

SCALE 1: 2500



Insert Plan Number SP337707

State copyright reserved

BRSS8354-000-22-17 SP337707

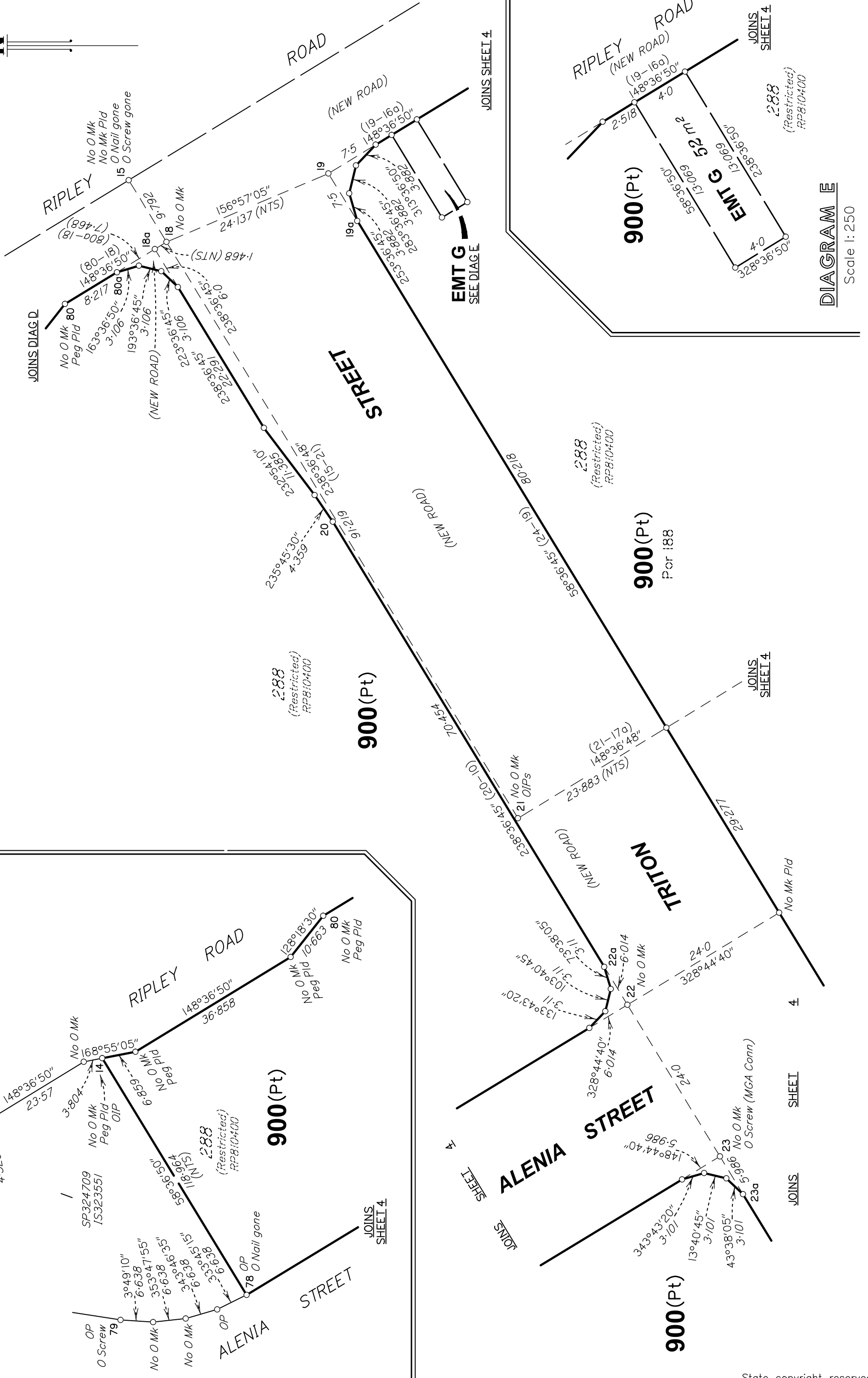


DIAGRAM D  
SCALE 1: 750



SCALE 1: 500

State copyright reserved

Insert Plan Number **SP337707**

DIAGRAM E

Scale 1: 250

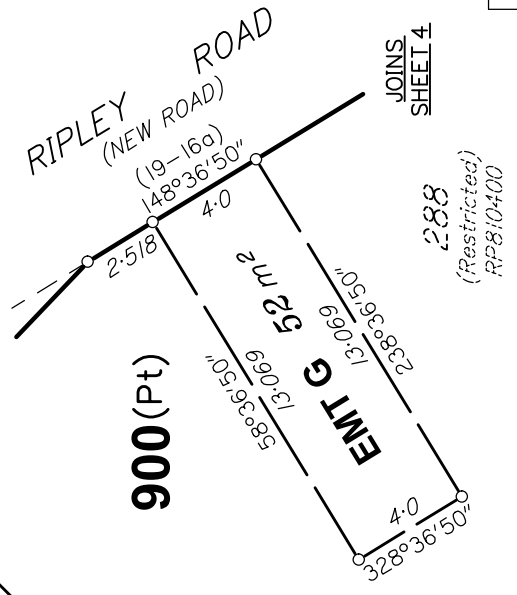
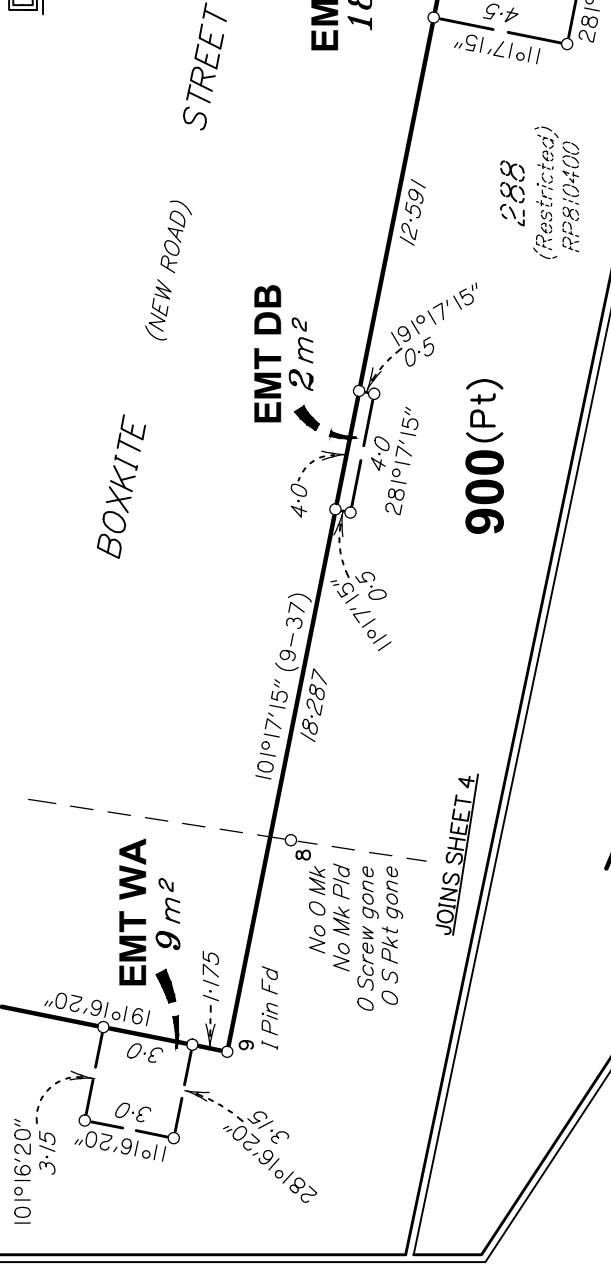


DIAGRAM G

SCALE 1: 250



EMT DC  
18 m²

EMT DB  
2 m²

BOXKITE

STREET  
(NEW ROAD)

900 (Pt)

EMT DE  
14 m²

BOXKITE

900 (Pt)

DIAGRAM H

SCALE 1: 250

900 (Pt)

STREET

900 (Pt)

EMT DE  
SEE DIAG H

EMT DD  
SEE DIAG H

EMT DC  
SEE DIAG G

EMT DB  
SEE DIAG G

EMT WA  
SEE DIAG I

EMT DB  
SEE DIAG G

BOXKITE

(NEW ROAD)

STREET

900 (Pt)

EMT DE  
SEE DIAG H

EMT DD  
SEE DIAG H

EMT DC  
SEE DIAG G

EMT DB  
SEE DIAG G

EMT WA  
SEE DIAG I

EMT DB  
SEE DIAG G

BOXKITE

(NEW ROAD)

STREET

900 (Pt)

EMT DE  
SEE DIAG H

EMT DD  
SEE DIAG H

EMT DC  
SEE DIAG G

EMT DB  
SEE DIAG G

EMT WA  
SEE DIAG I

EMT DB  
SEE DIAG G

BOXKITE

(NEW ROAD)

STREET

900 (Pt)

EMT DE  
SEE DIAG H

EMT DD  
SEE DIAG H

EMT DC  
SEE DIAG G

EMT DB  
SEE DIAG G

EMT WA  
SEE DIAG I

EMT DB  
SEE DIAG G

BOXKITE

(NEW ROAD)

STREET

900 (Pt)

EMT DE  
SEE DIAG H

EMT DD  
SEE DIAG H

EMT DC  
SEE DIAG G

EMT DB  
SEE DIAG G

EMT WA  
SEE DIAG I

EMT DB  
SEE DIAG G

BOXKITE

(NEW ROAD)

STREET

900 (Pt)

EMT DE  
SEE DIAG H

EMT DD  
SEE DIAG H

EMT DC  
SEE DIAG G

EMT DB  
SEE DIAG G

EMT WA  
SEE DIAG I

EMT DB  
SEE DIAG G

BOXKITE

(NEW ROAD)

STREET

900 (Pt)

EMT DE  
SEE DIAG H

EMT DD  
SEE DIAG H

EMT DC  
SEE DIAG G

EMT DB  
SEE DIAG G

EMT WA  
SEE DIAG I

EMT DB  
SEE DIAG G

BOXKITE

(NEW ROAD)

STREET

900 (Pt)

EMT DE  
SEE DIAG H

EMT DD  
SEE DIAG H

EMT DC  
SEE DIAG G

EMT DB  
SEE DIAG G

EMT WA  
SEE DIAG I

EMT DB  
SEE DIAG G

BOXKITE

(NEW ROAD)

STREET

900 (Pt)

EMT DE  
SEE DIAG H

EMT DD  
SEE DIAG H

EMT DC  
SEE DIAG G

EMT DB  
SEE DIAG G

EMT WA  
SEE DIAG I

EMT DB  
SEE DIAG G

BOXKITE

(NEW ROAD)

STREET

900 (Pt)

EMT DE  
SEE DIAG H

EMT DD  
SEE DIAG H

EMT DC  
SEE DIAG G

EMT DB  
SEE DIAG G

EMT WA  
SEE DIAG I

EMT DB  
SEE DIAG G

BOXKITE

(NEW ROAD)

STREET

900 (Pt)

EMT DE  
SEE DIAG H

EMT DD  
SEE DIAG H

EMT DC  
SEE DIAG G

EMT DB  
SEE DIAG G

EMT WA  
SEE DIAG I

EMT DB  
SEE DIAG G

BOXKITE

(NEW ROAD)

STREET

900 (Pt)

EMT DE  
SEE DIAG H

EMT DD  
SEE DIAG H

EMT DC  
SEE DIAG G

EMT DB  
SEE DIAG G

EMT WA  
SEE DIAG I

EMT DB  
SEE DIAG G

BOXKITE

(NEW ROAD)

STREET

900 (Pt)

EMT DE  
SEE DIAG H

EMT DD  
SEE DIAG H

EMT DC  
SEE DIAG G

EMT DB  
SEE DIAG G

EMT WA  
SEE DIAG I

EMT DB  
SEE DIAG G

BOXKITE

(NEW ROAD)

STREET

900 (Pt)

EMT DE  
SEE DIAG H

EMT DD  
SEE DIAG H

EMT DC  
SEE DIAG G

EMT DB  
SEE DIAG G

EMT WA  
SEE DIAG I

EMT DB  
SEE DIAG G

BOXKITE

(NEW ROAD)

STREET

900 (Pt)

EMT DE  
SEE DIAG H

EMT DD  
SEE DIAG H

EMT DC  
SEE DIAG G

EMT DB  
SEE DIAG G

EMT WA  
SEE DIAG I

EMT DB  
SEE DIAG G

BOXKITE

(NEW ROAD)

STREET

900 (Pt)

EMT DE  
SEE DIAG H

EMT DD  
SEE DIAG H

EMT DC  
SEE DIAG G

EMT DB  
SEE DIAG G

EMT WA  
SEE DIAG I

EMT DB  
SEE DIAG G

BOXKITE

(NEW ROAD)

STREET

900 (Pt)

EMT DE  
SEE DIAG H

EMT DD  
SEE DIAG H

EMT DC  
SEE DIAG G

EMT DB  
SEE DIAG G

EMT WA  
SEE DIAG I

EMT DB  
SEE DIAG G

BOXKITE

(NEW ROAD)

STREET

900 (Pt)

EMT DE  
SEE DIAG H

EMT DD  
SEE DIAG H

EMT DC  
SEE DIAG G

EMT DB  
SEE DIAG G

EMT WA  
SEE DIAG I

EMT DB  
SEE DIAG G

BOXKITE

(NEW ROAD)

STREET

900 (Pt)

EMT DE  
SEE DIAG H

EMT DD  
SEE DIAG H

EMT DC  
SEE DIAG G

EMT DB  
SEE DIAG G

EMT WA  
SEE DIAG I

EMT DB  
SEE DIAG G

BOXKITE

(NEW ROAD)

STREET

900 (Pt)

EMT DE  
SEE DIAG H

EMT DD  
SEE DIAG H

EMT DC  
SEE DIAG G

EMT DB  
SEE DIAG G

EMT WA  
SEE DIAG I

EMT DB  
SEE DIAG G

BOXKITE

(NEW ROAD)

STREET

900 (Pt)

EMT DE  
SEE DIAG H

EMT DD  
SEE DIAG H

EMT DC  
SEE DIAG G

EMT DB  
SEE DIAG G

EMT WA  
SEE DIAG I

EMT DB  
SEE DIAG G

BOXKITE

(NEW ROAD)

STREET

900 (Pt)

EMT DE  
SEE DIAG H

EMT DD  
SEE DIAG H

EMT DC  
SEE DIAG G

EMT DB  
SEE DIAG G

EMT WA  
SEE DIAG I

EMT DB  
SEE DIAG G

BOXKITE

(NEW ROAD)

STREET

900 (Pt)

EMT DE  
SEE DIAG H

EMT DD  
SEE DIAG H

EMT DC  
SEE DIAG G

EMT DB  
SEE DIAG G

EMT WA  
SEE DIAG I

EMT DB  
SEE DIAG G

BOXKITE

(NEW ROAD)

STREET

900 (Pt)

EMT DE  
SEE DIAG H

EMT DD  
SEE DIAG H

EMT DC  
SEE DIAG G

EMT DB  
SEE DIAG G

EMT WA  
SEE DIAG I

EMT DB  
SEE DIAG G

BOXKITE

(NEW ROAD)

STREET

900 (Pt)

EMT DE  
SEE DIAG H

EMT DD  
SEE DIAG H

EMT DC  
SEE DIAG G

EMT DB  
SEE DIAG G

EMT WA  
SEE DIAG I

EMT DB  
SEE DIAG G

BOXKITE

(NEW ROAD)

STREET

900 (Pt)

EMT DE  
SEE DIAG H

EMT DD  
SEE DIAG H

EMT DC  
SEE DIAG G

EMT DB  
SEE DIAG G

EMT WA  
SEE DIAG I

EMT DB  
SEE DIAG G

BOXKITE

(NEW ROAD)

STREET

900 (Pt)

EMT DE  
SEE DIAG H

EMT DD  
SEE DIAG H

EMT DC  
SEE DIAG G

EMT DB  
SEE DIAG G

EMT WA  
SEE DIAG I

EMT DB  
SEE DIAG G

BOXKITE

(NEW ROAD)

STREET

900 (Pt)

EMT DE  
SEE DIAG H

EMT DD  
SEE DIAG H

EMT DC  
SEE DIAG G

EMT DB  
SEE DIAG G

EMT WA  
SEE DIAG I

EMT DB  
SEE DIAG G

BOXKITE

(NEW ROAD)

STREET

900 (Pt)

EMT DE  
SEE DIAG H

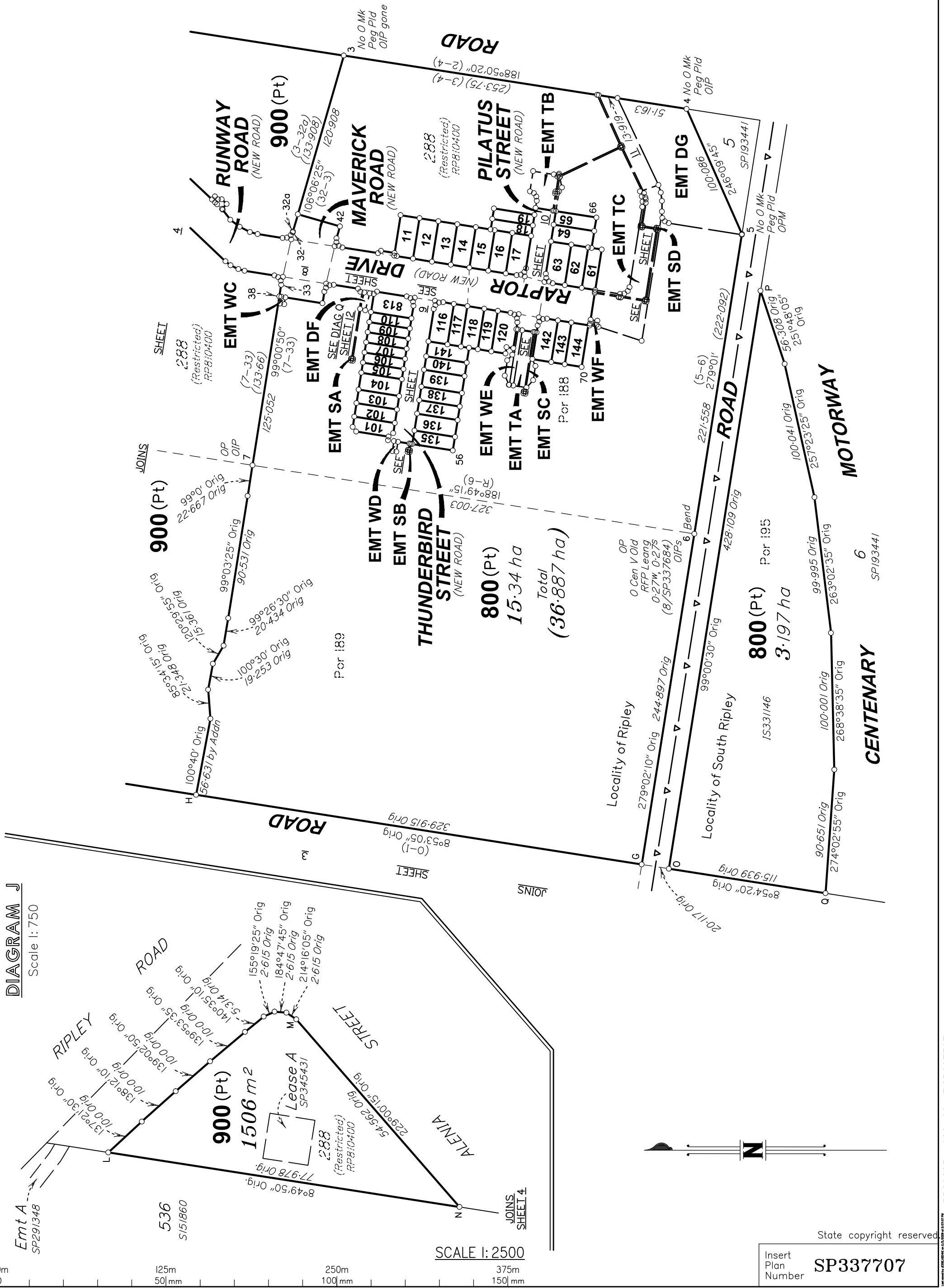
EMT DD  
SEE DIAG H

EMT DC  
SEE DIAG G

EMT DB  
SEE DIAG G

EMT WA  
SEE DIAG I

EMT DB  
SEE DIAG G



**DIAGRAM J**  
Scale 1: 750

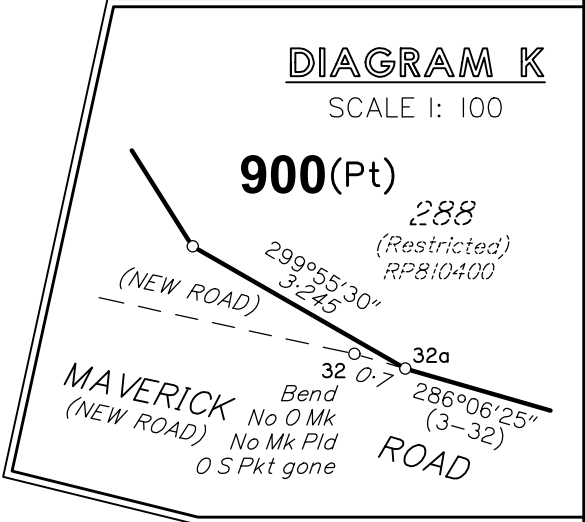
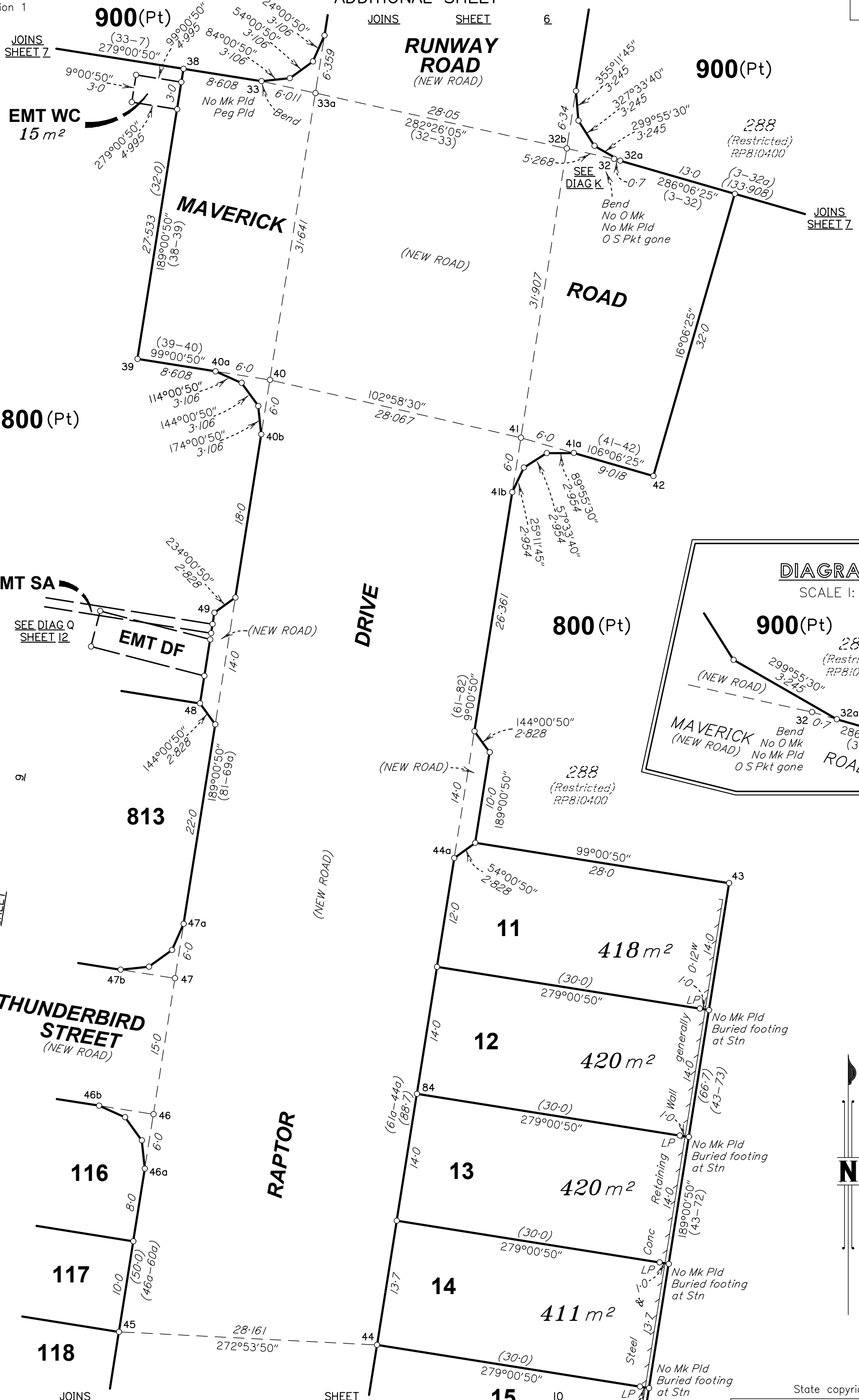
SCALE 1: 2500



State copyright reserved

Insert Plan Number **SP337707**

BRSS8354-000-22-17 SP337707



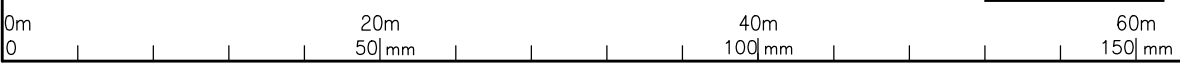
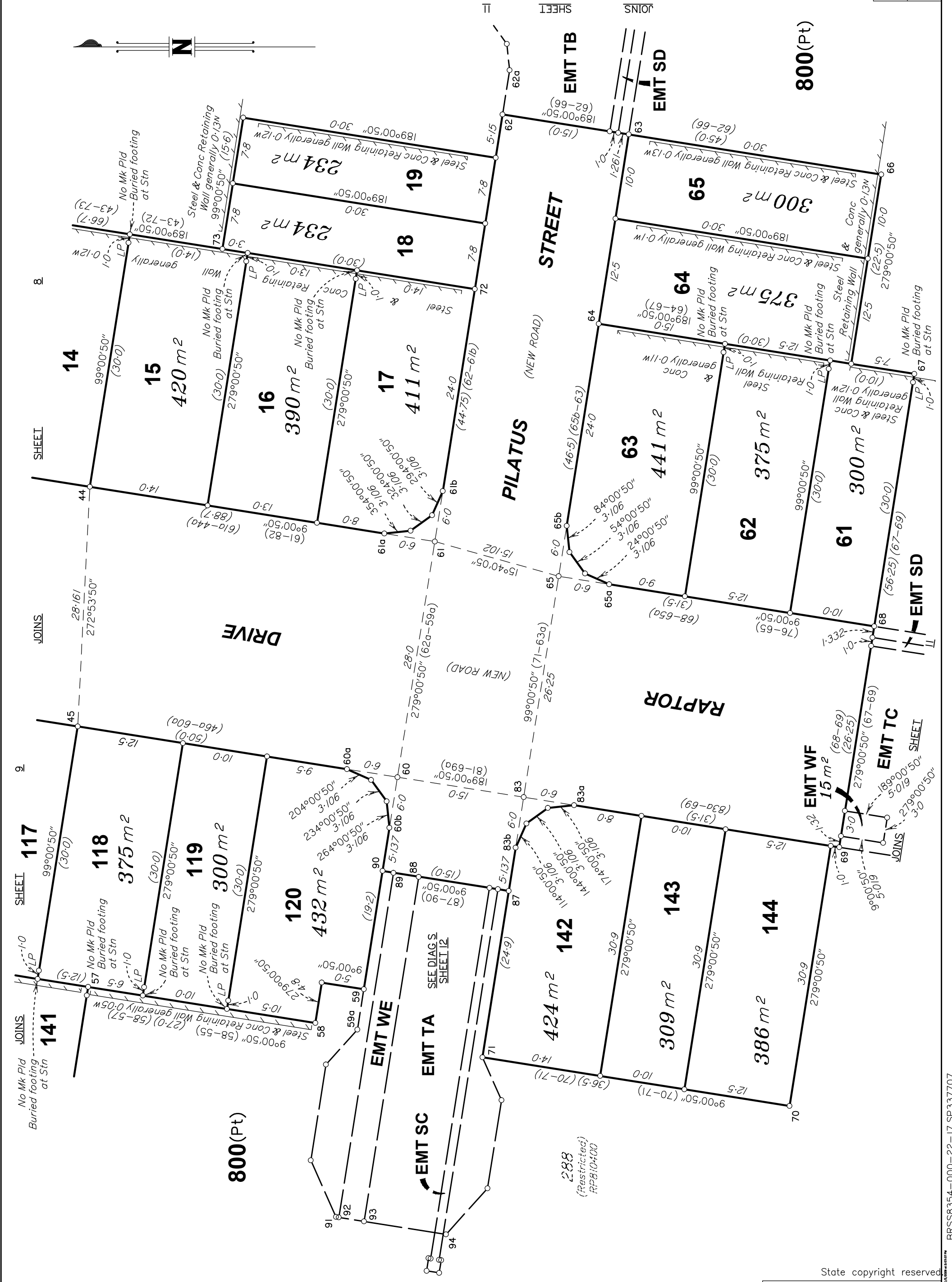
SCALE 1: 400

State copyright reserved

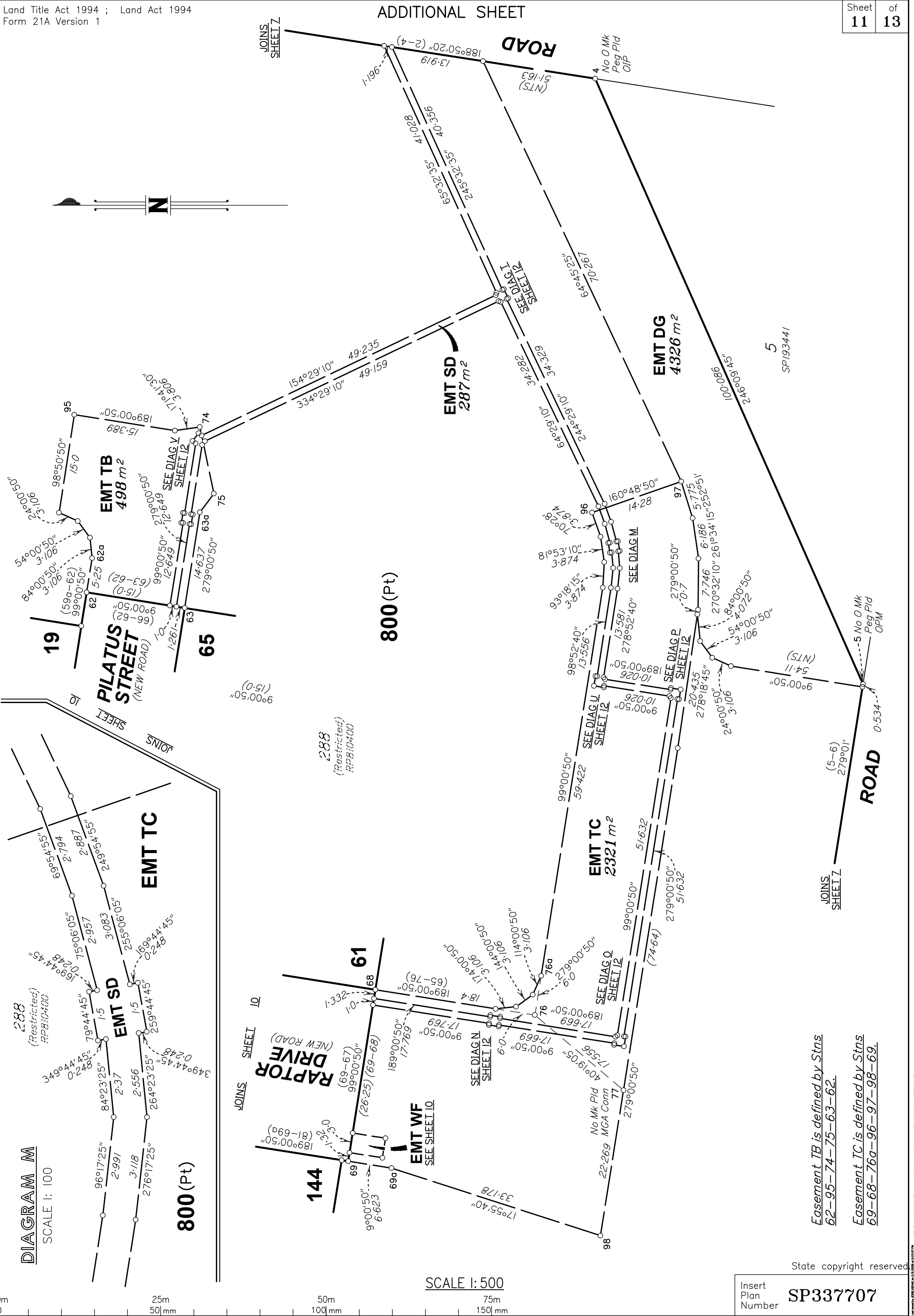
Insert Plan Number **SP337707**

BRSS8354-000-22-17 SP337707





State copyright reserved  
 Insert Plan Number **SP337707**



**DIAGRAM M**  
SCALE 1: 100

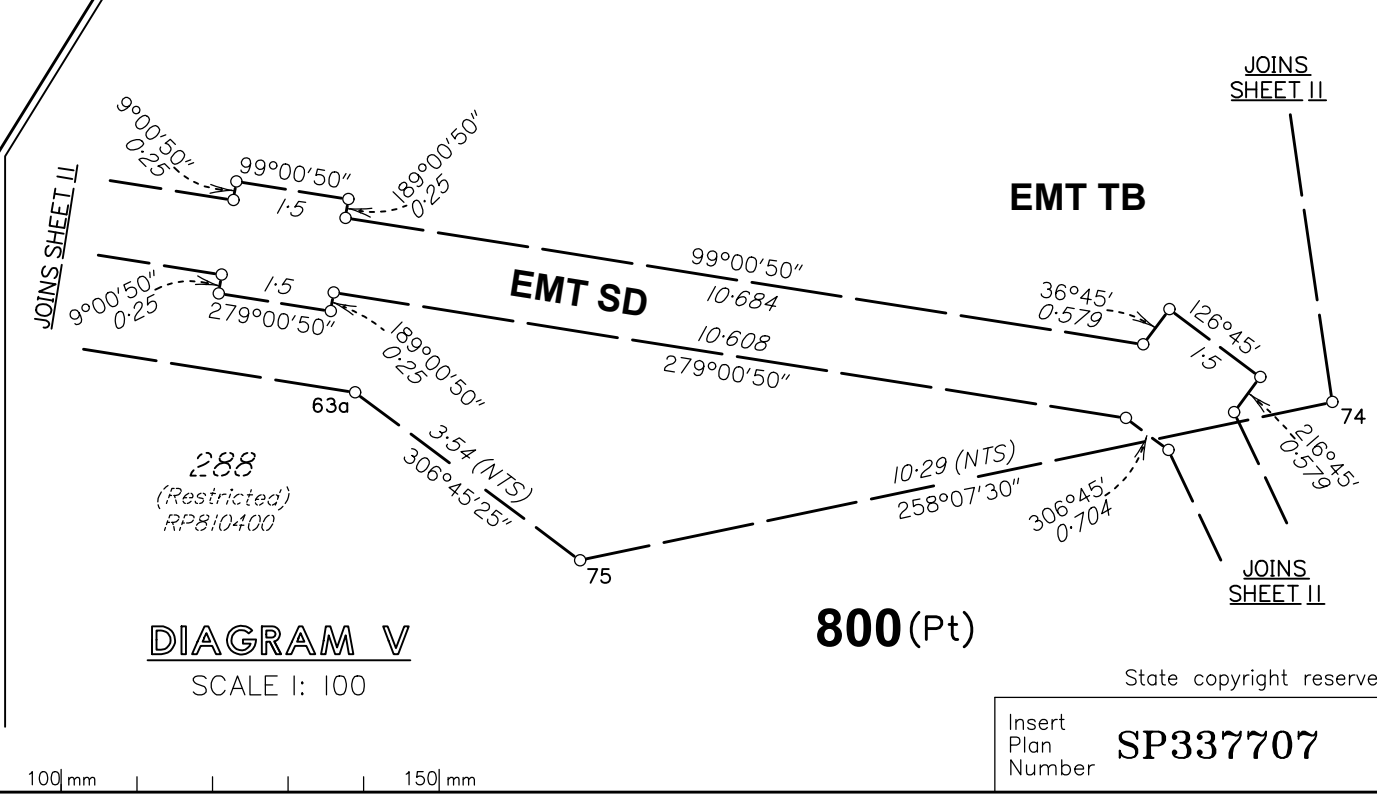
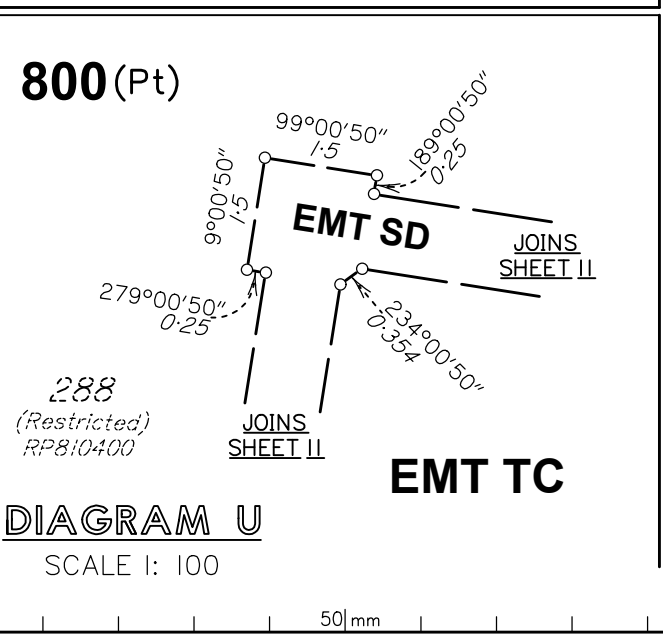
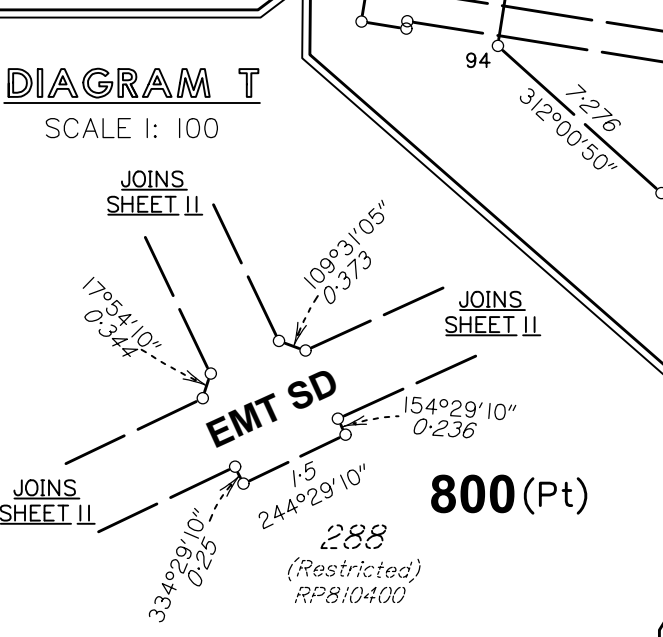
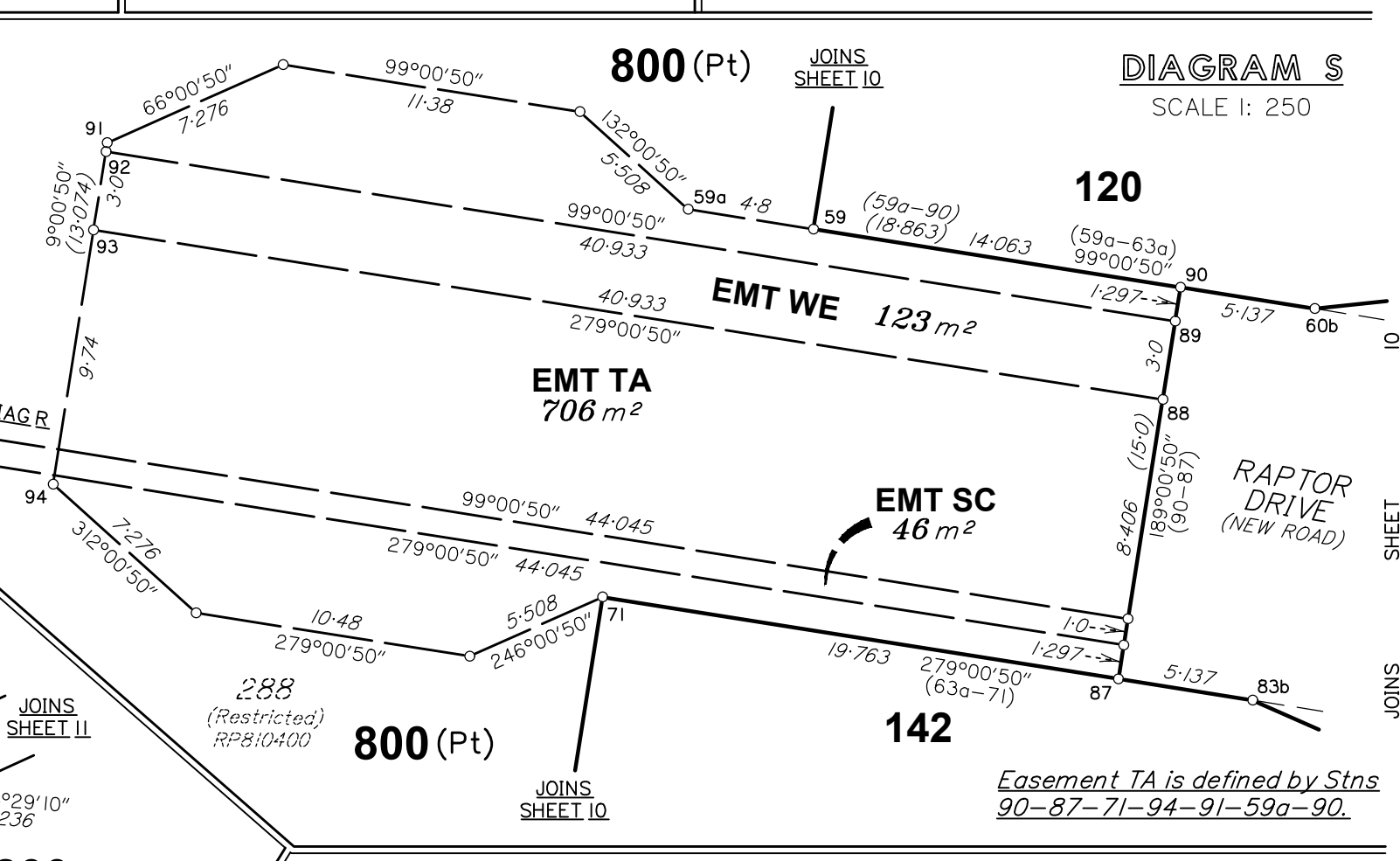
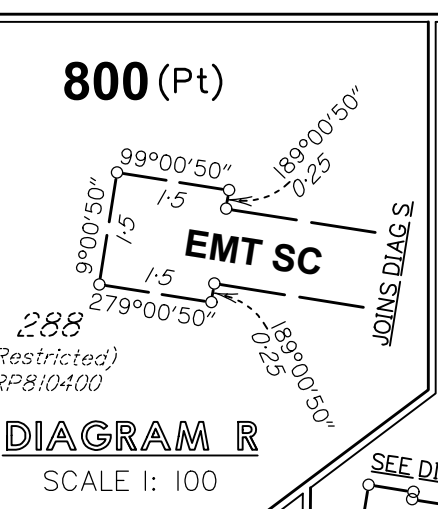
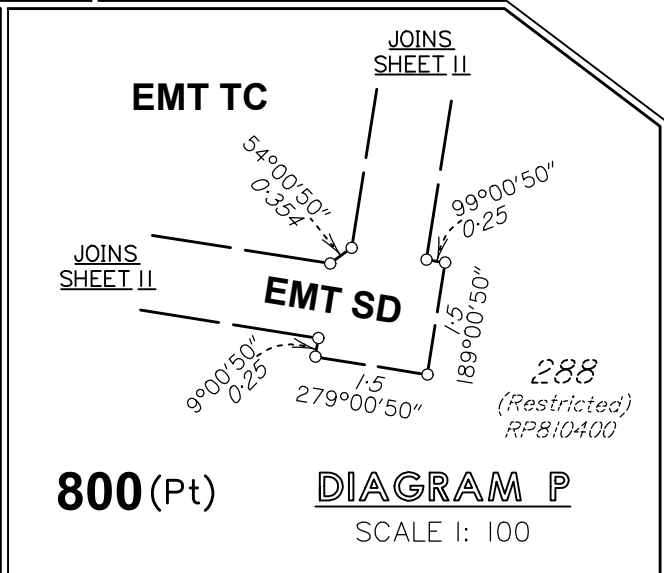
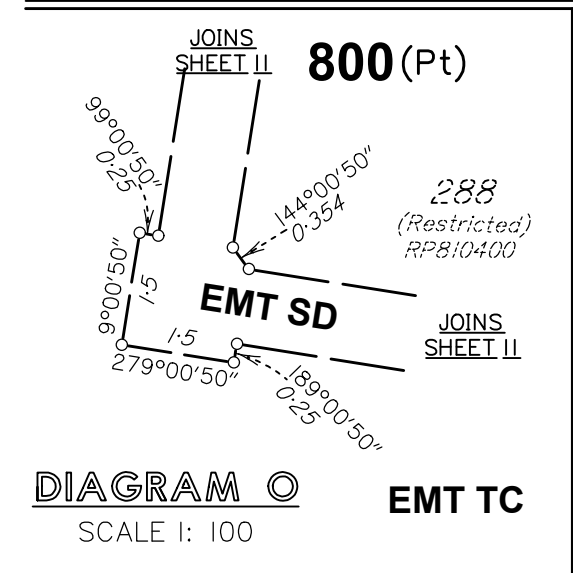
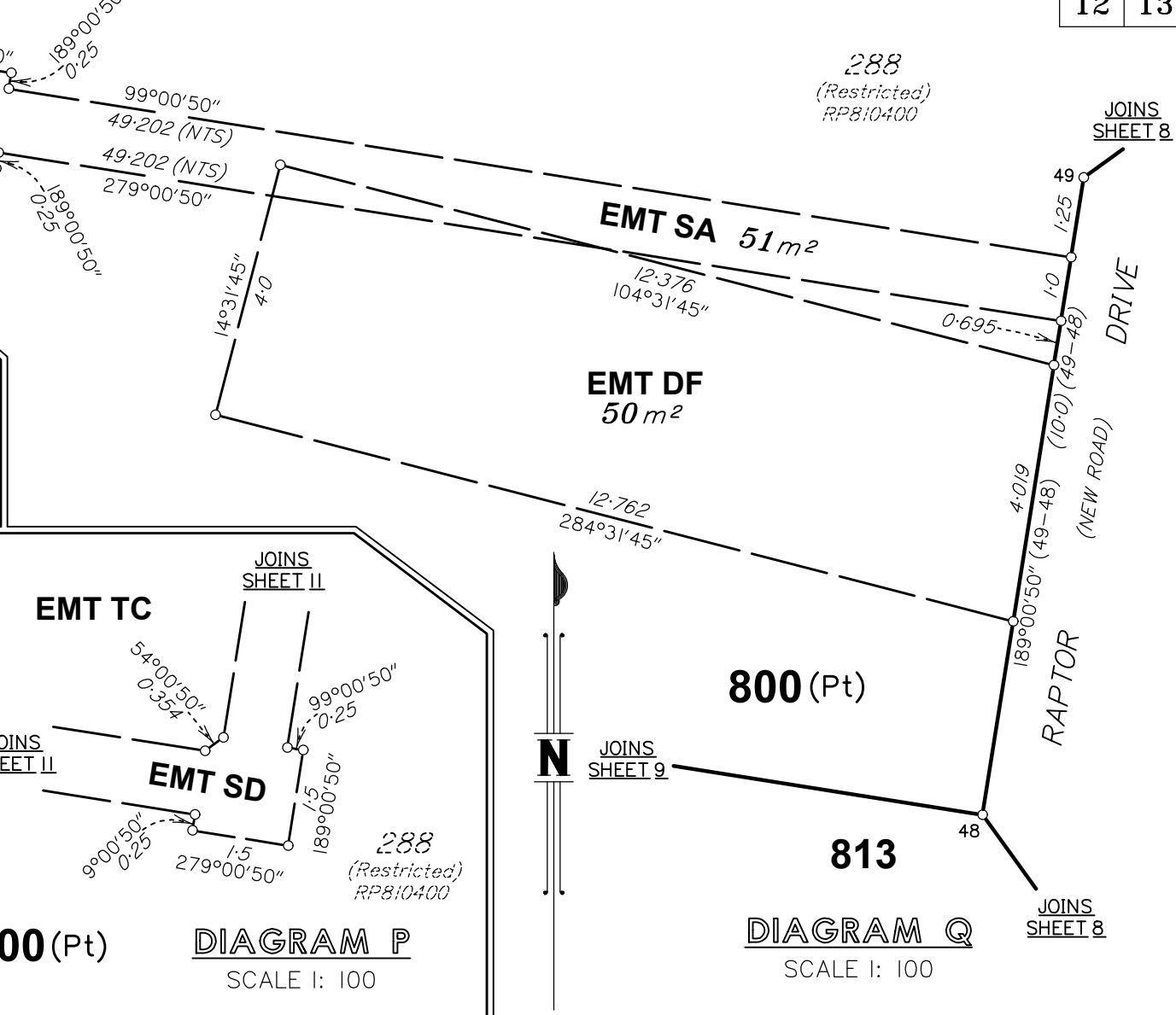
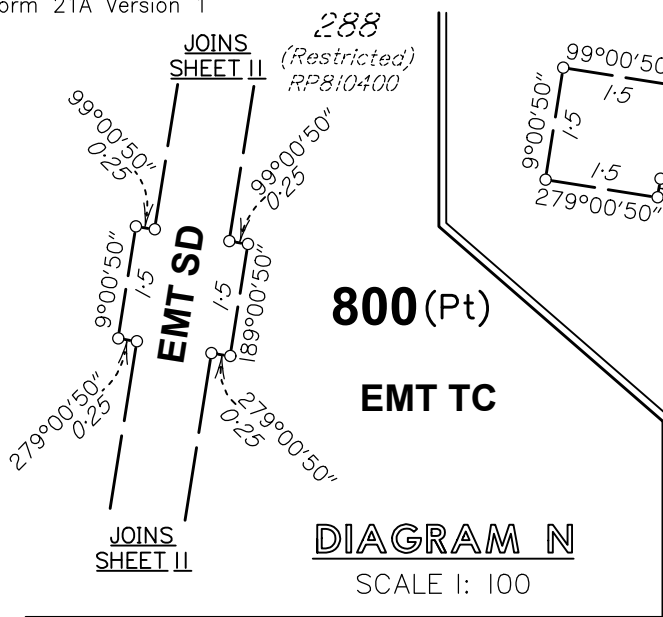
SCALE 1: 500

*Easement IB is defined by Stns  
62-95-74-75-63-62.*  
*Easement TC is defined by Stns  
69-68-76a-96-97-98-69.*

Insert Plan Number **SP337707**

State copyright reserved

BRSS8354-000-22-17 SP337707



*Easement TA is defined by Stns 90-87-71-94-91-59a-90.*

*Depth Restriction From The Surface*  
*Lots 11-19, 61-65, 101-110, 116-120, 135-144 & 813*

DEPTH	DEFINING PLAN	PART OF LOT AFFECTED
24.384m	S151860	Entire Lot

*Depth Restriction From The Surface - Lot 800*

DEPTH	DEFINING PLAN	PART OF LOT AFFECTED
15.24m	S151860	C-D-E-F-C
24.384m	S151860	7-38-48-50a-56-57-70-66-73-42-3-4-6-7

*Depth Restriction From The Surface - Lot 900*

DEPTH	DEFINING PLAN	PART OF LOT AFFECTED
15.24m	S151860	A-B-C-F-A
24.384m	S151860	8-36-33-7-8
24.384m	S151860	11-23a-10-11
24.384m	S151860	L-M-N-L
24.384m	S151860	78-14-20-22a-78
24.384m	S151860	2-3-32a-29a-26b-24a-19a-17-2

**Reinstatement Report**

Plans used in this survey.  
IS331146, SP349894, IS323551, DP337689, SP337684, SP324709,  
SP309070, IS257386, RP229320 and RP190343.

This survey is a stage of a larger subdivision as per the plans listed above. All measured original boundaries common with previous surveys listed above measure as per those plans. Original marks measured or gone are noted on the face of this Survey Plan.

PERMANENT MARKS

PM	ORIGIN	BEARING	DIST	NO
5-OPM	21/SP193441	235°48'35"	11.43	161450

REFERENCE MARKS

STN	TO	ORIGIN	BEARING	DIST
1	OIP	10/IS257386	184°10'05"	5.46
1	OIP	10/IS257386	327°54'05"	24.613
2	OIP	4/RP190343	98°50'	1.0
3	OIP gone	31/SP337684	331°09'	1.351
4	OIP	22/SP193441	18°23'05"	0.988
6	OIP	8/SP337684	75°54'	1.145
6	OIP	8/SP337684	300°05'	2.083
7	OIP	30/SP337684	63°11'	3.188
8	O Screw gone	28/SP324709	276°04'20"	5.861
8	O S Pkt	28/SP324709	98°50'40"	12.55
9	I Pin Fd		213°22'30"	25.343
10	Screw in path		119°03'	5.706
10	I Pin Fd		209°10'30"	37.506
11	O Nail in path (N&C)	2/IS323551	135°45'30"	16.354
13	O Screw in path	7/IS323551	52°59'	3.611
14	OIP	8/IS323551	221°49'15"	28.437
15	O Nail gone	8/IS257386	76°14'03"	4.567
15	O Screw gone	3/SP324709	40°56'30"	9.374
16	OIP gone	2/RP190343	58°36'50"	1.0
16	O Nail gone	9/IS257386	17°57'05"	11.364
17	OIP	6/RP190343	238°36'48"	1.0
17a	OIP	RP229320	238°36'48"	1.0
18a	Screw in Chnl		123°22'	8.823
19	Screw in path		192°52'	2.891
21	OIP	RP229320	238°36'48"	1.0
21	OIP	5/SP324709	325°12'30"	29.916
22	Screw in Chnl		199°44'	2.84
23	O Screw in gully trap	1/IS323551	337°00'55"	69.785
24	Screw in Chnl		297°21'	7.362
24	S Pkt Fd		105°06'30"	18.246
25	Screw in Chnl		145°44'	3.569
25	I Pin Fd		297°05'	14.871
26	Screw in Chnl		275°28'	7.857
26	I Pin Fd		62°29'30"	20.74
28	Screw in Chnl		253°49'	6.348
28	I Pin Fd		349°43'30"	20.097
29	Screw in Chnl		312°37'	8.448
32	O S Pkt gone	41/SP337684	27°57'35"	89.002
32b	Screw in Chnl		219°07'	10.305
33a	Screw in Chnl		179°48'	11.414
35	Screw in Chnl		59°39'	7.986
35	I Pin Fd		273°40'30"	17.445
40	Screw in Chnl		93°15'	7.907
41	Screw in Chnl		292°42'	4.579
42	S Pkt		115°08'	15.074
44a	S Pkt		107°35'45"	14.645
46	Screw in Chnl		97°19'	4.701
47	Screw in Chnl		105°10'	4.418
50	S Pkt		121°02'	49.092
61	S Pkt		81°20'30"	19.151
77	S Pkt		148°25'30"	15.754
78	O Nail in Conc gone	9/IS323551	78°13'45"	35.018
79	O Screw in kerb	11/IS323551	349°59'30"	46.984
84	Screw in gully trap		246°21'	4.75
85	Screw in gully trap		196°35'	4.015
86	Screw in gully trap		71°38'	8.604

Not in gully trap

MGA Conn

MGA Conn

MGA COORDINATES GDA-2020

STATION	EAST	NORTH	ZONE	P-U	LINEAGE	METHOD
O Screw from Stn 23	479 946.987	6 937 912.057	56	0.03	Derived	RTK
Star Pkt from Stn 77	479 979.718	6 937 236.607	56	0.03	Derived	RTK